

must be considered in entrance unit construction. These dimensions and the door widths can accommodate your materials.

Building Sign: Available for Branding = 10' From the Floor to the Bottom of the Sign

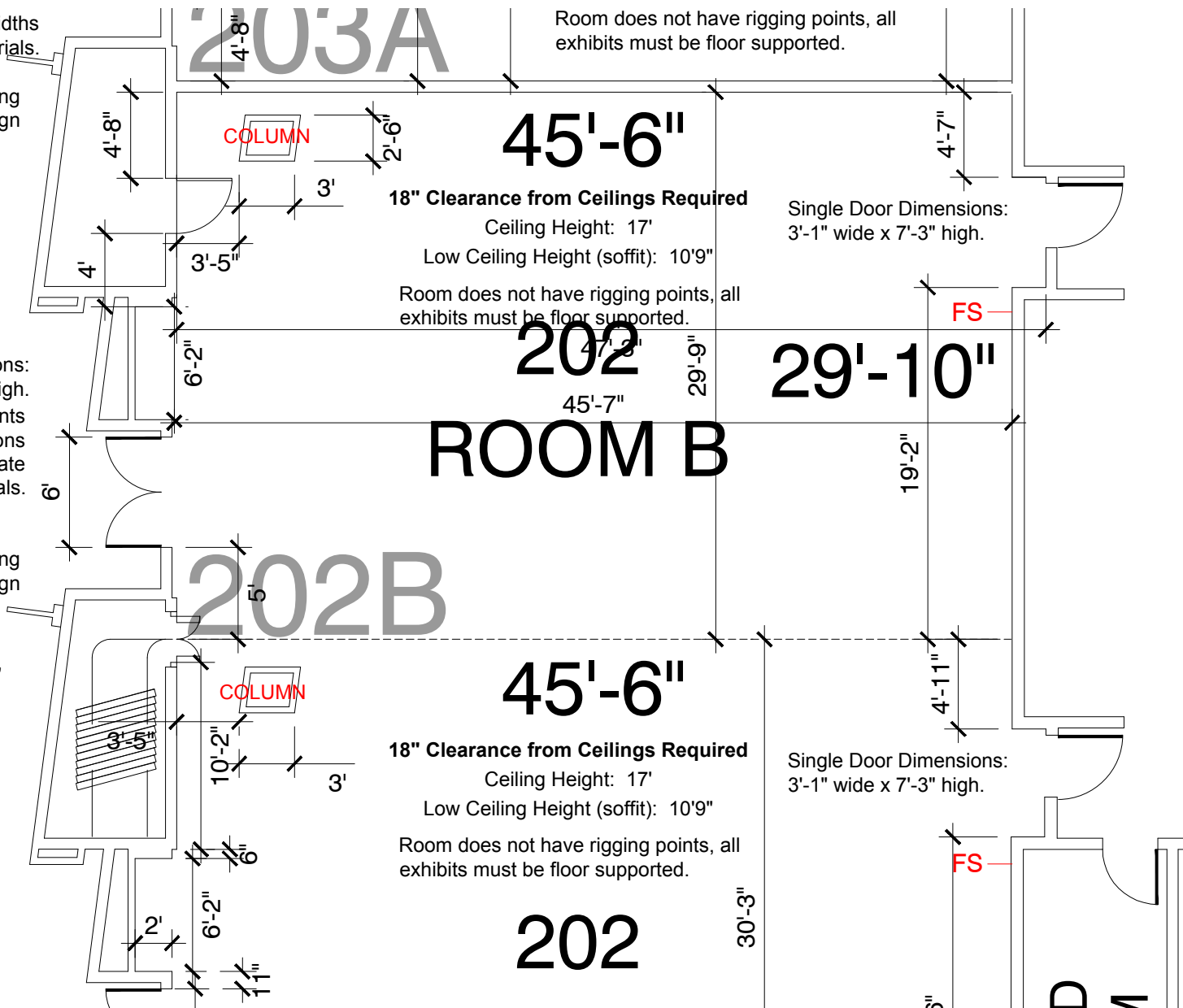
Double Door Dimensions: typically 5'-3" wide x 7'-3" high. Please confirm your exhibit components and product are within these dimensions and the door widths can accommodate your materials.

Building Sign: Available for Branding = 10' From the Floor to the Bottom of the Sign

Lobby

CEILING HEIGHT: 16'8"
LOW CEILING HEIGHT: 10'9"

Entrance Units in the Finger Lobbies: Entrance units are allowed in the lobby. The soffits in the entrances are 10'10" from the floor. The Anaheim Fire Marshal requires an 18" space from the top of the exhibit structure to the bottom of the soffit to allow for the proper disbursement ratio from the fire sprinklers. Entrances may not extend into the finger lobby past the wall of the facility. Each Meeting Room has a permanent room identification sign that must be considered in entrance unit construction.



Level 2 Meeting Room 202B

Disclaimer: Every effort has been made to ensure the accuracy of all information contained on this floor plan. However, no warranties, either expressed or implied, are made with respect to this floor plan. If the location of building columns, utilities or architectural components of the facility is a consideration in the construction or usage of an exhibit, it is the sole responsibility of the exhibitor to physically inspect the facility to verify all dimensions and locations.

FS = Fire Strobes are located at 6'6" from the floor unless noted otherwise (4"x8") - DO NOT BLOCK
 ES = Exit Signs are located at 9'7" from the floor unless noted otherwise - DO NOT BLOCK
 FE = Fire Extinguisher Cabinet - DO NOT BLOCK
 FH = Fire Hose Cabinet - DO NOT BLOCK