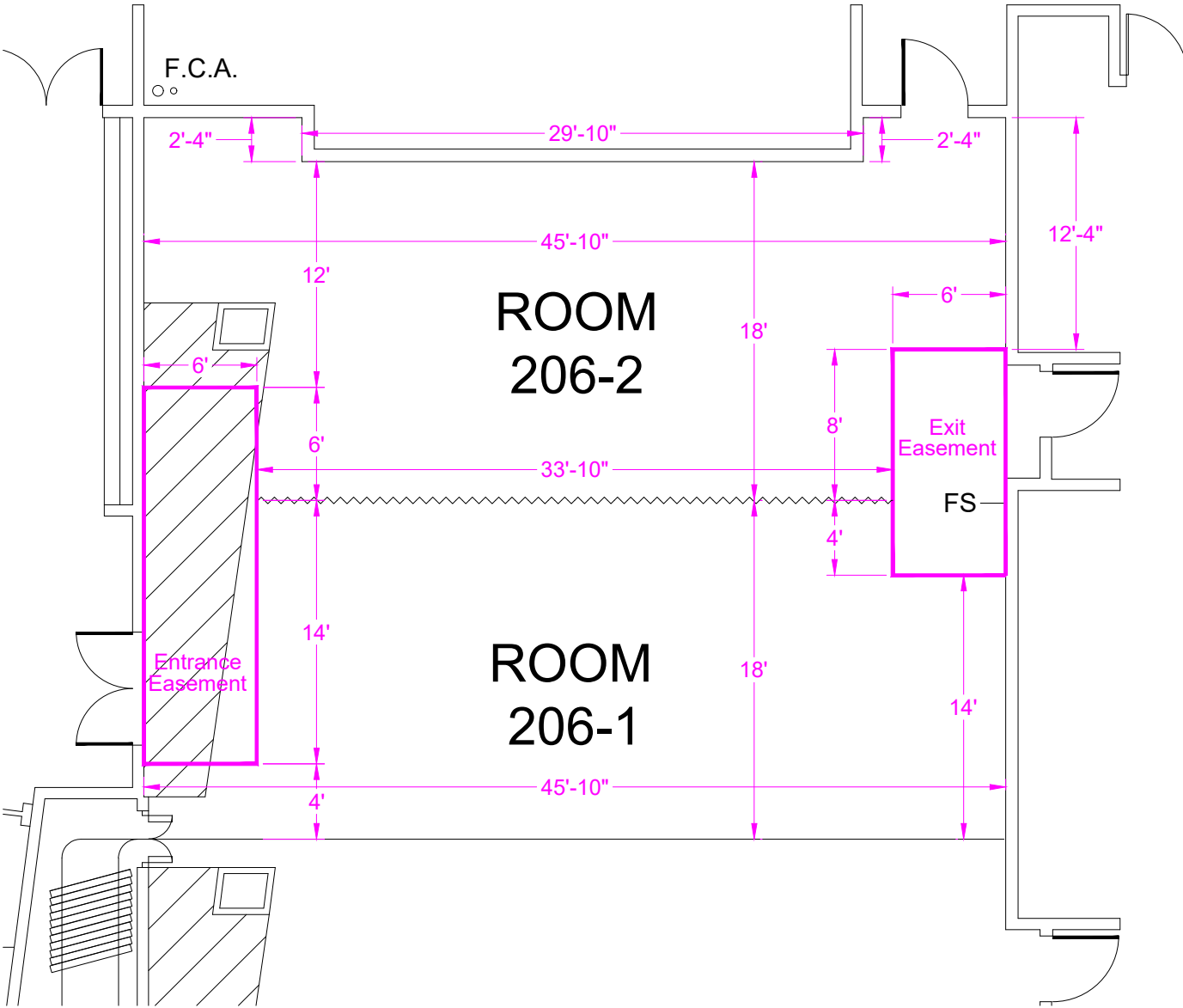


Please be aware of building support columns with fire equipment in or around your booth space.  
General booth guidelines can be found here:  
<https://www.namm.org/exhibit/thenammshow/important-guidelines/display-guidelines-rules-regulations>  
NOTE: Fire equipment must be visible and accessible at all times



REFERENCE GUIDELINES (unless otherwise noted on map)

- FS (Fire Strobe): Located at 6'-6" from the floor unless noted otherwise - DO NOT BLOCK
- FE (Fire Extinguisher): Must remain visible, accessible and unobstructed
- SP (Fire Speaker): 6"x6" & located at 9'9" height from the floor and shall be visible and unobstructed
- FHC (Fire Hose Connection): Must remain visible, accessible and unobstructed FDR (Facility Door Release): Must not be blocked

PLEASE NOTE:

- This diagram indicates the size and approximate position of the obstruction within the booth with measurements. This may vary slightly onsite once the floor has been marked
- All fire equipment on columns must remain visible and accessible at all times and fire hoses must be clear to the aisle.
- Fire alarm devices have a strobe and a speaker at two different heights on a column
- Materials may not be affixed to columns; damage will be billed back to the exhibitor by the Anaheim Convention Center.

SECOND & THIRD FLOOR NOTES

- Maintain a 20 foot clear path throughout the lobby on the second and third floors. No items shall be placed against the railing.
- Items may be placed in the "finger lobbies" however a 13 foot clearance on each side shall be maintained from side-wall to center of the floor. If items are placed on each side of the walls, then a 26 foot clearance shall be maintained in the center of the finger lobby.
- Entrance Units in the Finger Lobbies: Entrance units are allowed in the lobby. The soffits in the entrances are 10'10" from the floor. The Anaheim Fire Marshal requires an 18" space from the top of the exhibit structure to the bottom of the soffit to allow for the proper disbursement ratio from the fire sprinklers. Entrances may not extend into the finger lobby past the wall of the facility. Each Meeting Room has a permanent room identification sign that must be considered in entrance unit construction.
- Meeting rooms that have 50 or more people shall have a minimum of 2 exits. One located at the front and rear of the room. Exits, aisles and pathways shall be unobstructed. When a screen or stage is necessary in a small meeting room, a 3 foot clear path is required to the exit door and an illuminated or self illuminating exit sign is required when the existing exit sign is not visible.
- Furniture shall meet TB 117.
- Single Door Dimensions: typically 3'-1" wide x 7'-3" high. Double Door Dimensions: typically 5'-3" wide x 7'-3" high.