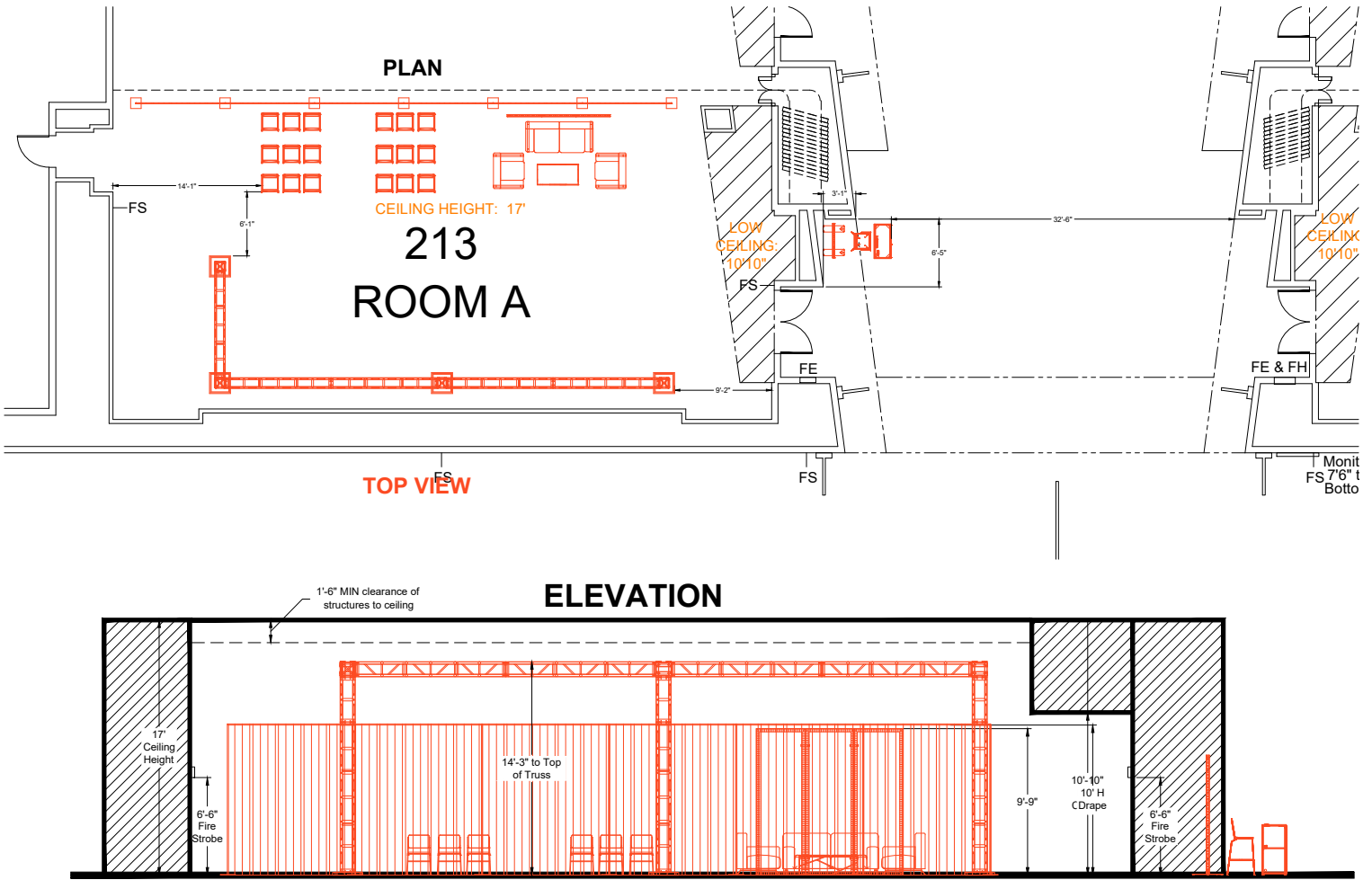


Please be aware of building support columns with fire equipment in or around your booth space.
 General booth guidelines can be found here:
<https://www.namm.org/exhibit/thenammshow/important-guidelines/display-guidelines-rules-regulations>
 NOTE: Fire equipment must be visible and accessible at all times



Second & Third Floor Notes

- Maintain a 20 foot clear path throughout the lobby on the second and third floors. No items shall be placed against the railing.
- Items may be placed in the "finger lobbies" however a 13 foot clearance on each side shall be maintained from side-wall to center of the floor. If items are placed on each side of the walls, then a 26 foot clearance shall be maintained in the center of the finger lobby.
- Meeting rooms that have 50 or more people shall have a minimum of 2 exits. One located at the front and rear of the room. Exits, aisles and pathways shall be unobstructed. When a screen or stage is necessary in a small meeting room, a 3 foot clear path is required to the exit door and an illuminated or self illuminating exit sign is required when the existing exit sign is not visible.
- Furniture shall meet TB 117.

REFERENCE GUIDELINES (unless otherwise noted on map)

- FS (Fire Strobe):** ACC L2 & L3 are 6'-6" height DO NOT BLOCK
- FE (Fire Extinguisher):** Must remain visible, accessible and unobstructed
- SP (Fire Speaker):** 6"x6" & located at 9'9" height from the floor and shall be visible and unobstructed
- FH/FHC (Fire Hose Connection):** Must remain visible, accessible and unobstructed
- FDR (Facility Door Release):** Must not be blocked
- ES (Exit Sign):** Located 9'-7" height unless noted otherwise. Must remain visible

PLEASE NOTE:

- This diagram indicates the size and approximate position of the obstruction within the booth with measurements. This may vary slightly onsite once the floor has been marked
- All fire equipment on columns must remain visible and accessible at all times and fire hoses must be clear to the aisle.
- Fire alarm devices have a strobe and a speaker at two different heights on a column
- Materials may not be affixed to columns; damage will be billed back to the exhibitor by the Anaheim Convention Center.

■ Building Support Column
 Exhibitors are free to brand & build around columns, as long as fire equipment is clear and nothing is adhered to the column or physical building.
 Utility From Walls
 Rigging through FACILITY ONLY